



TEREX TA33/TA34N/TA34/TA40/TA50

Articulating Boom Lifts



FEATURES

- Compact dimensions, superior maneuverability allow access within confined spaces – TA34N is only 48" (1.22 m) wide
- Maximum platform heights from 33 ft. (10 m) to 48 ft. 2 in. (14.7 m)
- Horizontal reach from 20 ft. 6 in. (6.3 m) to 29 ft. 10 in. (9.1 m)
- 500 lbs. (227 kg) maximum platform capacity
- Energy efficient hydraulic system
- Infinitely variable proportional controls
- Auxiliary controls at ground level
- Automatic platform leveling
- Multi-axial slope sensor with alarm
- 5-year structural warranty, 1-year parts and labor warranty
- Terex Support Plus product service

**simple, available and
cost effective™**

Machines shown may have optional equipment.

TEREX TA33 / TA34N / TA34 / TA40 / TA50 SPECIFICATIONS

Description	TA33	TA34N	TA34	TA40	TA50
Height - Working (maximum)	39' (12 m)	40' 7" (12.4 m)	40' 7" (12.4 m)	46' 7" (14.2 m)	54' 8" (16.7 m)
Platform (maximum)	33' (10 m)	34' (10.4 m)	34' (10.4 m)	40' (12.2 m)	48' 2" (14.7 m)
Stowed	6' 6" (1.97 m)	6' 7" (2.02 m)	6' 6" (1.97 m)	6' 5" (1.97 m)	7' 6" (2.3 m)
Length (overall)	13' 3" (4.03 m)	16' 6" (5.02 m)	16' 6" (5.02 m)	17' 1" (5.2 m)	18' 6" (5.64 m)
Width (maximum)	4' 11" (1.5 m)	4' 0" (1.22 m)	4' 11" (1.50 m)	4' 11" (1.5 m)	6' 1" (1.85 m)
Horizontal Reach	20' 6" (6.3 m)	23' 3" (7.1 m)	23' 3" (7.1 m)	27' 2" (8.3 m)	29' 10" (9.1 m)
Boom Angle - Above Horizontal	70°	70°	70°	70°	74°
Below Horizontal	-18°	-10°	-10°	0°	-13°
Platform Dimensions	30" x 50" (0.76 x 1.3 m)	30" x 48" (0.76 x 1.1 m)	30" x 50" (0.76 x 1.3 m)	30" x 50" (0.76 x 1.3 m)	27" x 60" (0.7 x 1.5 m)
Load Capacity (maximum)	500 lbs. (227 kg)	500 lbs. (227 kg)	500 lbs. (227 kg)	500 lbs. (227 kg)	500 lbs. (227 kg)
Platform Rotation	70°	70°	70°	140°	130°
Wheelbase	5' 3" (1.6 m)	5' 3" (1.6 m)	5' 3" (1.6 m)	5' 11" (1.8 m)	6' 6" (1.98 m)
Wheel Track (outside to outside)	4' 11" (1.5 m)	4' (1.22 m)	4' 11" (1.5 m)	4' 11" (1.5 m)	6' 1" (1.85 m)
Turret Tailswing	Zero @ 14' 9" (4.5 m)	Zero @ 15' (4.75 m)	Zero @ 15' (4.75 m)	Zero @ 21' 4" (6.5 m)	Zero @ 25' (7.6 m)
Turret Rotation	360° Non-Continuous	360° Non-Continuous	360° Non-Continuous	360° Non-Continuous	355° Non-continuous
Turning Radius					
Inside Curb	5' 3" (1.6 m)	9' 10" (3.0 m)	5' 3" (1.6 m)	7' 11" (2.4 m)	8' 6" (2.59 m)
Outside Curb	10' 2" (3.1 m)	13' 10" (4.2 m)	10' 2" (3.1 m)	12' 8" (3.9 m)	13' 3" (4.05 m)
Travel Speed					
Stowed	0-2.5 mph (0-4 km/h)	0-2.5 mph (0-4 km/h)	0-2.5 mph (0-4 km/h)	0-3.0 mph (0-5 km/h)	0-2.5 mph (0-4 km/h)
Elevated	0-0.47 mph (0-0.75 km/h)	0-0.5 mph (0-0.75 km/h)	0-0.5 mph (0-0.75 km/h)	0-0.5 mph (0-0.75 km/h)	0-0.47 mph (0-0.75 km/h)
Gradeability*	25% (14°)	20% (11°)	20% (11°)	20% (11°)	20% (11°)
Controls					
Boom Functions	Proportional	Proportional	Proportional	Proportional	Proportional
Drive	Proportional	Proportional	Proportional	Proportional	Proportional
Power Source	48 Volts DC	48 Volts DC	48 Volts DC	48 Volts DC	48 Volts DC
Charger	8-6V @ 217 amp/hr	8-6V @ 217 amp/hr	8-6V @ 217 amp/hr	8-6V @ 217 amp/hr	8-6V @ 217 amp/hr
25 amp	25 amp	25 amp	25 amp	25 amp	25 amp
Hydraulic System					
Reservoir Capacity	2.5 gal. (9.0 L)	2.5 gal. (9.0 L)	2.5 gal. (9.0 L)	4.0 gal. (15.0 L)	7.75 gal. (29 L)
Tires (solid)	22 x 9 x 16	22 x 9 x 16	22 x 9 x 16	815 x 15 x 7	815 x 15 x 7
Ground Clearance	5.5" (0.14 m)	5.5" (0.14 m)	5.5" (0.14 m)	9.8" (0.25 m)	8" (0.2 m)
Approx. Shipping Weight	8,316 lbs (3780 kg)	14,300 lbs. (6500 kg)	10,604 lbs. (4820 kg)	14,300 lbs. (6500 kg)	15,350 lbs. (6960 kg)

* Gradeability data is theoretical and is limited by tire slip, stability, or engine oil pan design.

STANDARD EQUIPMENT

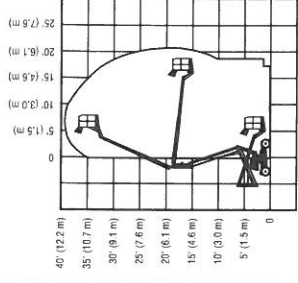
- All-steel, high strength booms • Boom function emergency hand pump
- Spring-applied, hydraulically released parking brakes • Swing gate
- Infinitely variable proportional controls • Automatic platform leveling
- 110 or 220 VAC wiring and GFI receptacle to platform • On board 110V or 220V battery charger • Multi-axial slope sensor with alarm
- Auxiliary controls at ground level • All steel work platform (all aluminum on TA34N) • Recessed platform top rail • Lanyard eyelets for safety harness attachment • Guarded foot and hand controls with return to neutral feature • Emergency all-power shut down switch on console
- Fully accessible hydraulic / electric componentry • Non-marking solid tires • Lifting lugs • Hourmeter • All motion alarm • Battery condition indicator • Flashing amber beacon • External power track • 2 - wheel drive • Zero tailswing design in working position • Terex Support Plus product service

OPTIONS

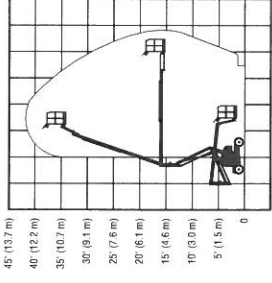
- Platform work light • Compressed air line to platform

We reserve the right to amend these specifications at any time without notice. The only warranty applicable is our standard written warranty applicable to the particular product and sale. We make no other warranty, expressed or implied.

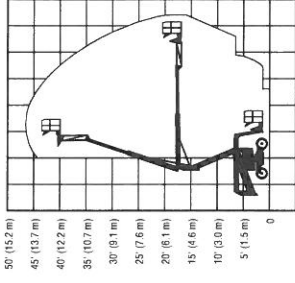
For more information, product demonstration, or details on lease and rental plans, please contact your local Terex Aerials Distributor.



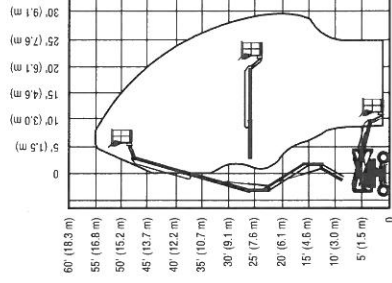
TA33



TA34N/TA34



TA40



TA50

TEREX AERIALS



106 12th Street S.E.
Waverly, IA 50677-9466 USA
(319) 352-3920 • FAX: (319) 352-5727
E-mail: waverly@terexlifting.com